



geboquick

Complete range of GEBO Quick

Universal compression fittings designed for connecting sections of water systems made of steel or PE.

Available pipe diameters: 1/2" – 2" for steel pipes, for black steel pipes from 20 - 63,5 mm and for PE pipes from 20 mm - 63 mm; for bigger diameters please see our series GEBO Special.



TYPE QA MALE THREAD COMPRESSION FITTING

p. 8



TYPE QI FEMALE THREAD COMPRESSION FITTING

p. 9



TYPE QO COMPRESSION FITTING CLAMPING ON BOTH SIDES

p. 10



TYPE QT TEE COMPRESSION FITTING CLAMPING ON BOTH SIDES WITH FEMALE OUTLET

p. 11



SUPPORT SLEEVES

p. 12



UNIVERSAL CAST IRON COMPRESSION FITTINGS

MATERIAL USED:

- Fitting body:
malleable cast iron EN-GJMB-350-10, EN 1562
- Cone nut:
malleable cast iron EN-GJMB-350-10, EN 1562
- Compression ring:
galvanized steel
- Washer:
galvanized steel
- Sealing ring:
NBR
- Thread:
according to ISO 7/1, DIN EN 10226-1
- Galvanization:
hot-dip galvanising of the fitting body and cone nuts (Hot dip galvanising according to DIN EN 10242). The requirements of surfaces occurring in the course of machining are galvanically zinc coated.

AREAS OF APPLICATION:

Repairs of existing pipelines and newly built systems for different media.

Application:

FOR STEEL PIPES

DIN EN 10255

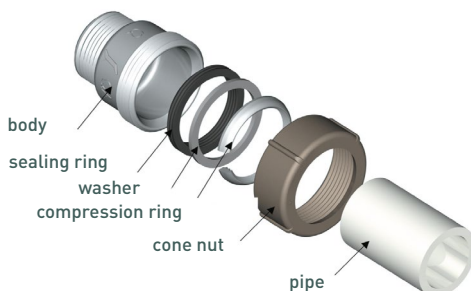
FOR BLACK STEEL PIPES

DIN EN 10220 series 1, 2 and 3

FOR PE PIPES

PE 80, PE 100, PE-Xa (each SDR 11 series) according to DVGW work sheet GW 335 A2/A3 and DIN 8074/8075, DIN EN 12201-2 and DIN 16893

GEBO fittings are designed for continuous operation.



TYPE QA **MALE THREAD COMPRESSION FITTING**

FOR STEEL PIPES	DIN EN 10255
FOR BLACK STEEL PIPES	DIN EN 10220 series 1, 2 and 3
FOR PE PIPES	PE 80, PE 100, PE-Xa (each SDR 11 series) according to DVGW work sheet GW 335 A2/A3 and DIN 8074/8075, DIN EN 12201-2 and DIN 16893



MEDIA:

water, compressed air, gas

APPLICATION AREAS AND OPERATING TEMPERATURE:

heating water up to 80°C (exclusively for steel pipes); water: up to 25°C, compressed air (exclusively for steel pipes): max.: 70°C; gas: -20 °C to +60 °C (exclusively for steel pipes according to DIN EN 10255 and DIN EN 10220 series 1)

OPERATING PRESSURE:

compressed air 10 bar; water 10 bar; gas 5 bar

CERTIFICATES:

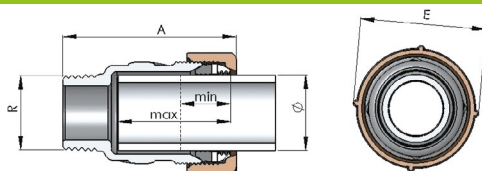
technical approval: national certificates depending on country
hygienic certificate: national certificates depending on country
water: DVGW certificate: DW-8511BU0380
gas: DVGW certificate NG-4502BL0450

DN	Pipe outer- ϕ [mm]	Connecting thread	Code
15	19.7 – 21.8	1/2"	17.195.00.01
20	24.6 – 27.3	3/4"	17.195.00.02
25	31.4 – 34.2	1"	17.195.00.03
32	40.0 – 42.9	1 1/4"	17.195.00.04
40	47.9 – 51.5	1 1/2"	17.195.00.05
50	59.7 – 63.6	2"	17.195.00.06

DIMENSIONS AND WEIGHTS

DN	Connecting thread R ISO 7/1	Pipe outer- ϕ from... to [mm]	STEEL PIPES	BLACK STEEL PIPES	PE PIPES	Weight [g]	Installation length ~A [mm]	Fitting width ~E [mm]	Pipe insertion depth min. [mm]	Pipe insertion depth max. [mm]
			Pipe outer- ϕ [mm]	Pipe outer- ϕ [mm]	Pipe outer- ϕ [mm]					
15	1/2"	19.7 – 21.8	21.3	20	20 x 1.9	180	65	42	22	40
20	3/4"	24.6 – 27.3	26.9	25	25 x 2.3	250	74	48	22	45
25	1"	31.4 – 34.2	33.7	31.8	32 x 2.9	335	78	56	24	47
32	1 1/4"	40.0 – 42.9	42.4	-	40 x 3.7	550	86	67	27	54
40	1 1/2"	47.9 – 51.5	48.3	51	50 x 4.6	565	89	72	25	55
50	2"	59.7 – 63.6	60.3	63.5	63 x 5.8	1030	107	92	28	65

COMPRESSION FITTINGS FOR STEEL PIPE, BLACK STEEL PIPES AND PE PIPES



For PE installation the use of support sleeves is necessary.



TYPE Q1	FEMALE THREAD COMPRESSION FITTING
FOR STEEL PIPES	DIN EN 10255
FOR BLACK STEEL PIPES	DIN EN 10220 series 1, 2 and 3
FOR PE PIPES	PE 80, PE 100, PE-Xa (each SDR 11 series) according to DVGW work sheet GW 335 A2/A3 and DIN 8074/8075, DIN EN 12201-2 and DIN 16893

MEDIA:

water, compressed air, gas

APPLICATION AREAS AND OPERATING TEMPERATURE:

heating water up to 80°C (exclusively for steel pipes); water: up to 25°C, compressed air (exclusively for steel pipes): max.: 70°C; gas: -20 °C to +60 °C (exclusively for steel pipes according to DIN EN 10255 and DIN EN 10220 series 1)

OPERATING PRESSURE:

compressed air 10 bar; water 10 bar; gas 5 bar

CERTIFICATES:

technical Approval: national certificates depending on country
hygienic certificate: national certificates depending on country
water: DVGW certificate: DW-8511BU0380
gas: DVGW certificate NG-4502BL0450

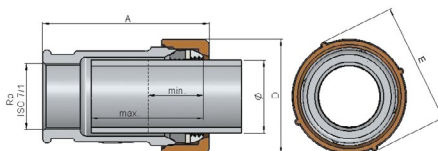


DN	Pipe outer- ϕ [mm]	Connecting thread	Code
15	19.7 – 21.8	1/2"	17.195.01.01
20	24.6 – 27.3	3/4"	17.195.01.02
25	31.4 – 34.2	1"	17.195.01.03
32	40.0 – 42.9	1 1/4"	17.195.01.04
40	47.9 – 51.5	1 1/2"	17.195.01.05
50	59.7 – 63.6	2"	17.195.01.06

DIMENSIONS AND WEIGHTS

DN	Connecting thread Rp ISO 7/1	Pipe outer- ϕ from...to [mm]	STEEL PIPES	BLACK STEEL PIPES	PE PIPES	Weight [g]	Installation length -A [mm]	Fitting width -E [mm]	Pipe insertion depth min. [mm]	Pipe insertion depth max. [mm]
			Pipe outer- ϕ [mm]	Pipe outer- ϕ [mm]	Pipe outer- ϕ [mm]					
15	1/2"	19.7 – 21.8	21.3	20	20 x 1.9	192	67	42	22	40
20	3/4"	24.6 – 27.3	26.9	25	25 x 2.3	255	72	48	22	45
25	1"	31.4 – 34.2	33.7	31.8	32 x 2.9	345	78	56	24	47
32	1 1/4"	40.0 – 42.9	42.4	-	40 x 3.7	550	84	67	27	54
40	1 1/2"	47.9 – 51.5	48.3	51	50 x 4.6	560	87	72	25	55
50	2"	59.7 – 63.6	60.3	63.5	63 x 5.8	1016	105	92	28	65

COMPRESSION FITTINGS FOR STEEL PIPE, BLACK STEEL PIPES AND PE PIPES



For PE installation the use of support sleeves is necessary.

TYPE Q0	COMPRESSION FITTING FOR CLAMPING ON BOTH SIDES
FOR STEEL PIPES	DIN EN 10255
FOR BLACK STEEL PIPES	DIN EN 10220 series 1, 2 and 3
FOR PE PIPES	PE 80, PE 100, PE-Xa (each SDR 11 series) according to DVGW work sheet GW 335 A2/A3 and DIN 8074/8075, DIN EN 12201-2 and DIN 16893



MEDIA:

water, compressed air, gas

APPLICATION AREAS AND OPERATING TEMPERATURE:

heating water up to 80°C (exclusively for steel pipes); water: up to 25°C, compressed air (exclusively for steel pipes): max.: 70°C; gas: -20 °C to +60 °C (exclusively for steel pipes according to DIN EN 10255 and DIN EN 10220 series 1)

OPERATING PRESSURE:

compressed air 10 bar; water 10 bar; gas 5 bar

CERTIFICATES:

technical Approval: national certificates depending on country

hygienic certificate: national certificates depending on country

water: DVGW certificate: DW-8511BU0380

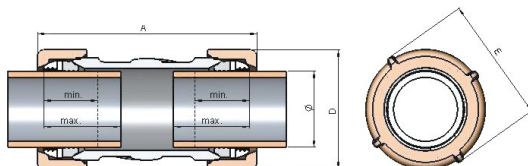
gas: DVGW certificate NG-4502BL0450

DN	Pipe outer- ϕ [mm]	Code
15	19.7 – 21.8	17.195.02.01
20	24.6 – 27.3	17.195.02.02
25	31.4 – 34.2	17.195.02.03
32	40.0 – 42.9	17.195.02.04
40	47.9 – 51.5	17.195.02.05
50	59.7 – 63.6	17.195.02.06

DIMENSIONS AND WEIGHTS

DN	Pipe outer- ϕ from...to [mm]	STEEL PIPES	BLACK STEEL PIPES	PE PIPES	Weight [g]	Installation length -A [mm]	Fitting width -E [mm]	Pipe inser-tion depth min. [mm]	Pipe inser-tion depth max. [mm]
		Pipe Outer- ϕ [mm]	Pipe Outer- ϕ [mm]	Pipe Outer- ϕ [mm]					
15	19.7 – 21.8	21.3	20	20 x 1.9	186	88	42	22	34
20	24.6 – 27.3	26.9	25	25 x 2.3	254	91	48	22	35
25	31.4 – 34.2	33.7	31.8	32 x 2.9	335	98	56	24	40
32	40.0 – 42.9	42.4	-	40 x 3.7	566	107	67	27	44
40	47.9 – 51.5	48.3	51	50 x 4.6	552	107	72	25	44
50	59.7 – 63.6	60.3	63.5	63 x 5.8	1000	128	92	28	54

COMPRESSION FITTINGS FOR STEEL PIPE, BLACK STEEL PIPES AND PE PIPES



For PE installation the use of support sleeves is necessary.



TYPE QT	TEE COMPRESSION FITTING FOR CLAMPING ON BOTH SIDES + OUTLET WITH FEMALE THREAD
FOR STEEL PIPES	DIN EN 10255
FOR BLACK STEEL PIPES	DIN EN 10220 series 1, 2 and 3
FOR PE PIPES	PE 80, PE 100, PE-Xa (each SDR 11 series) according to DVGW work sheet GW 335 A2/A3 and DIN 8074/8075, DIN EN 12201-2 and DIN 16893

MEDIA:

water, compressed air, gas

APPLICATION AREAS AND OPERATING TEMPERATURE:

heating water up to 80°C (exclusively for steel pipes); water: up to 25°C, compressed air (exclusively for steel pipes): max.: 70°C; gas: -20 °C to +60 °C (exclusively for steel pipes according to DIN EN 10255 and DIN EN 10220 series 1)

OPERATING PRESSURE:

compressed air 10 bar; water 10 bar; gas 5 bar

CERTIFICATES:

technical Approval: national certificates depending on country
hygienic certificate: national certificates depending on country
water: DVGW certificate: DW-8511BU0380
gas: DVGW certificate NG-4502BL0450

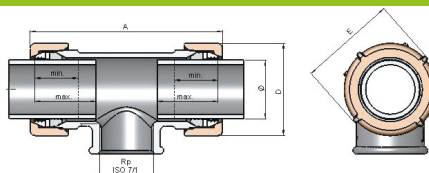


DN	Pipe outer- ϕ [mm]	Connecting thread	Code
15	19.7 – 21.8	1/2"	17.195.04.01
20	24.6 – 27.3	3/4"	17.195.04.02
25	31.4 – 34.2	1"	17.195.04.03
32	40.0 – 42.9	1 1/4"	17.195.04.04
40	47.9 – 51.5	1 1/2"	17.195.04.05
50	59.7 – 63.6	2"	17.195.04.06

DIMENSIONS AND WEIGHTS

DN	Connecting thread Rp ISO 7/1	Pipe outer- ϕ from... to [mm]	STEEL PIPES	BLACK STEEL PIPES	PE PIPES	Weight [g]	Installation length -A [mm]	Fitting width -E [mm]	Pipe insertion depth min. [mm]	Pipe insertion depth max. [mm]
			Pipe Outer- ϕ [mm]	Pipe Outer- ϕ [mm]	Pipe Outer- ϕ [mm]					
15	1/2"	19.7 – 21.8	21.3	20	20 x 1.9	237	92	42	22	33
20	3/4"	24.6 – 27.3	26.9	25	25 x 2.3	309	100	48	22	34
25	1"	31.4 – 34.2	33.7	31.8	32 x 2.9	444	112	56	24	37
32	1 1/4"	40.0 – 42.9	42.4	-	40 x 3.7	731	128	67	27	41
40	1 1/2"	47.9 – 51.5	48.3	51	50 x 4.6	776	130	72	25	39
50	2"	59.7 – 63.6	60.3	63.5	63 x 5.8	1327	161	92	28	49

COMPRESSION FITTINGS FOR STEEL PIPE, BLACK STEEL PIPES AND PE PIPES



For PE installation the use of support sleeves is necessary.

SUPPORT SLEEVES MADE OF BRASS FOR PLASTIC PIPES MADE OF PE80, PE100 AND PE-XA



- pipe series 5, SDR 11

	length	Code		length	Code
20 x 1.9	60	03.354.75.2019	40 x 3.7	75	03.354.75.4037
25 x 2.3	65	03.354.75.2523	50 x 4.6	80	03.354.75.5046
32 x 2.9	70	03.354.75.3230	63 x 5.8	90	03.354.75.6358

ASSEMBLY INSTRUCTIONS

FOR STEEL PIPES

DIN EN 10255

FOR BLACK STEEL PIPES

DIN EN 10220 series 1, 2 and 3

FOR PE PIPES

PE 80, PE 100, PE-Xa (each SDR 11 series) according to DVGW work sheet GW 335 A2/A3 and DIN 8074/8075, DIN EN 12201-2 and DIN 16893

Connecting thread ISO 7/1 / pipe size	1/2"	3/4"	1"
Pipe outer diameter [mm]	19.7 – 21.8	24.6 – 27.3	31.4 – 34.2
Connecting thread ISO 7/1 / pipe size	1 1/4"	1 1/2"	2"
Pipe outer diameter [mm]	40.00 – 42.9	47.9 – 51.5	59.7 – 63.6

APPLICATION AREAS AND MAX. OPERATING PRESSURE / MAX. OPERATING TEMPERATURE

STEEL PIPES: water: 10 bar / 25 °C; heating water: 6 bar / 80 °C; Gas: 5 bar / -20 °C to +60 °C (gases according to DVGW Worksheet G 260); compressed Air: 10 bar / 70 °C

PE-PIPES: water: 10 bar / 25 °C (for PE installation the use of support sleeves is necessary)

MEDIA: water, compressed air, gas

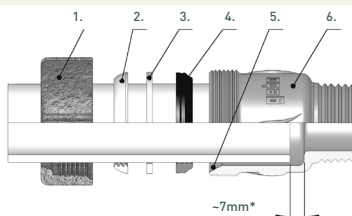
CERTIFICATES: technical approval: national certificates depending on country; hygienic certificate: national certificates depending on country; water: DVGW certificate: DW-8511BU0380; gas: DVGW certificate NG-4502BL0450

ASSEMBLY PROCESS:

the slitted compression ring (2) allows a straight assembly as well as an angled assembly with the pipes to be connected.

1. Detach the pipe end which is to be connected vertically to the axis. The pipe end must be burr-free, unshaped and without thread. Coatings and impurities are to be removed.
2. Insert the cone nut (1), compression ring (2), washer (3) and sealing element (4) as illustrated into the pipe end.
3. Insert the sealing element (4) at least 10 mm over the pipe end.
4. Insert the pipe end into the sealing chamber (5) of the fitting body (6) with the individual elements, check for perfect fit.
5. Screw together the cone nut (1) with the fitting body (6). In doing so, please pay attention that the pipe does not rotate simultaneously.

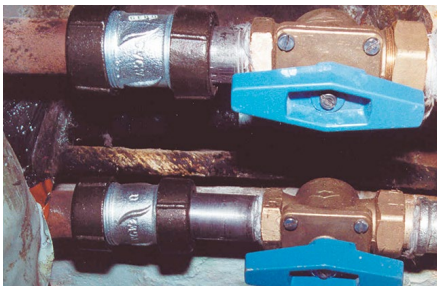
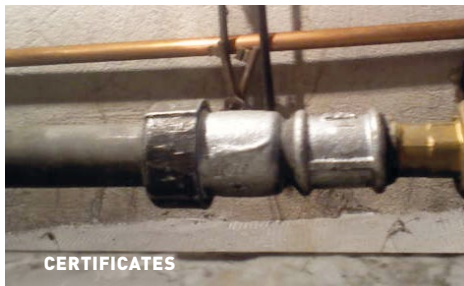
1. Cone nut
2. Compression ring
3. Washer
4. Sealing ring
5. Sealing chamber
6. Fitting body



* Pay special attention to installation length! Pipes must not be inserted up to the end stop or in the case of couplings not abut.

**APPLICATION EXAMPLES:****UNIVERSAL CAST IRON COMPRESSION FITTINGS**

GEBO Quick fittings are used mainly for repairs and overhauls of pipelines and water systems and for construction of new systems.



Products from the GEBO Quick range have the following certificates:

- technical approval national certificates depending on country
- hygienic certificate: national certificates depending on country
- water: DVGW certificate: DW-8511BU0380
- gas: DVGW certificate NG-4502BL0450